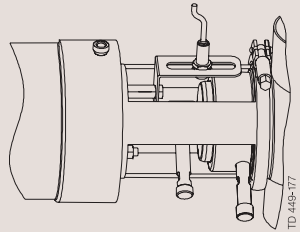




Mounting and Calibration Instructions

Indication unit for Unique



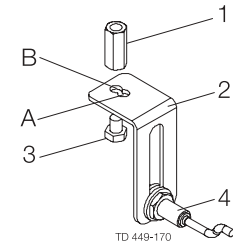
ESE00050 EN1  
9611-99-4556  
2005-04

1.

**Important:**

Because it is necessary to have upper seatlift enabled during calibration it is important to get the right approval before installing the indication unit. Always make sure the bracket and sensor is mounted so they never come into contact with the moving valve parts. After installation always check if bracket and sensor are clear of the moving valve parts when the valve is activated (open/closed).

2.



Seatlift Indication Unit

- 1 Nut
- 2 Bracket
- 3 Screw
- 4 Sensor

The tables in step 3 show how to mount the unit on the various valve sizes (A/B).

**NOTE!**

A and B correspond to the A and B mounting holes in the bracket.

3.

Table A

Sizes

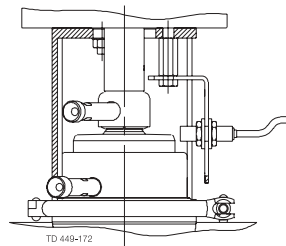
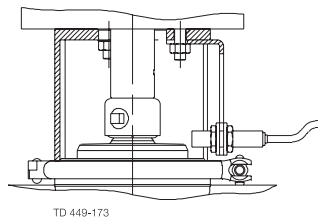
ISO	38	51	63.5	76.1	101.6
DN	40	50	65	80	100
Sch. 5	2"	3"	4"		

Table B

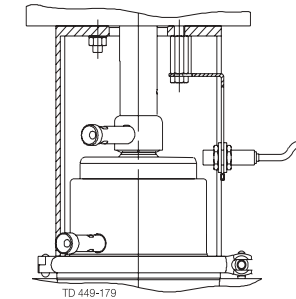
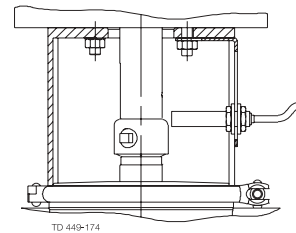
Sizes

DN	125	150
Sch. 5	5"	6"

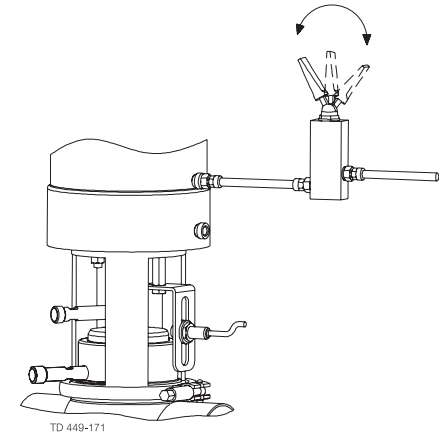
A.



B.



4.



When the indication unit is mounted check if it is free of the moving valve parts. Then activate the valve a few times to be sure.

5.

**Calibration:**

**Important:**

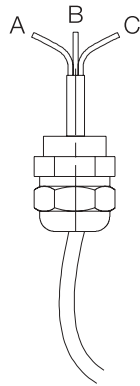
Because it is necessary to have upper seatlift enabled during calibration it is important to get the right approval before installing the indication unit. Always make sure that the bracket and sensor is mounted so they never are in contact with moving valve parts.

**NOTE!**

If the valve gets hot (+60° C) it might be necessary to perform the adjustment procedure again due to expansion of the valve which may cause constant seatlift feedback.

6.

Connect the indication unit to the ThinkTop® as shown below



Colour codes:

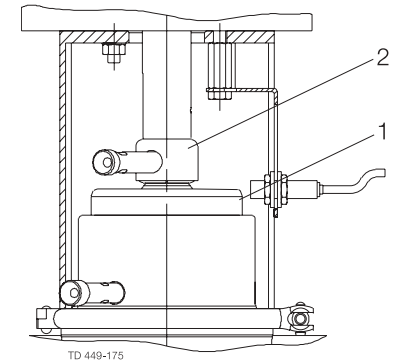
- A) Brown: +10-30 VDC - ThinkTop terminal 26
- B) Black: Signal (seatlift upper (1)) - ThinkTop terminal 24
- C) Blue: 0V - ThinkTop terminal 27

7.

**Warning!**

It is important to adjust the sensor correctly with regards to whether the valve is balanced (upper balance plug present) or not. Activation of the valve main movement may destroy the indication unit if the sensor is placed to detect on the coupling when the valve (upper seat) is balanced.

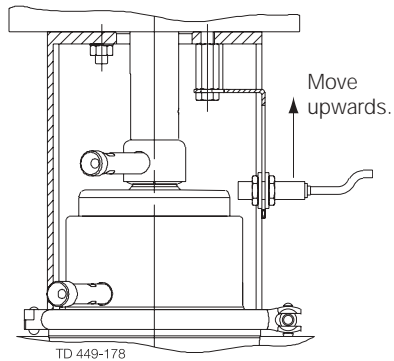
8.



To adjust the sensor enable upper seatlift and move the sensor just in front of either the edge of the balance plug (1) or the locking edge of the coupling (2).

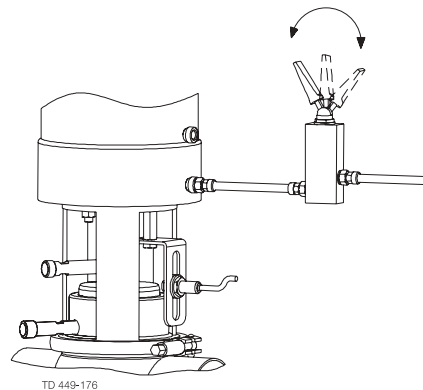
Adjust the sensor horizontally so that it detects the target (coupling or balance plug edge).

9.



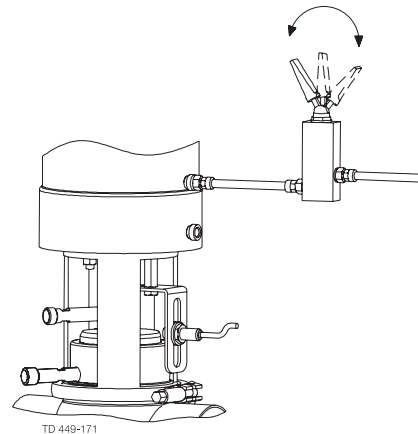
Move the sensor upwards until it just loses the signal and move it downwards again for about 1 mm and tighten the 2 sensor nuts to fix it.

10.



Activate the upper seatlift a couple of times to check if the sensor is in the correct position.

11.



When the indication unit is mounted ensure that it is free of moving valve parts - then activate the valve a few times to be sure.